

März 2013

**FLORIDA**  
the sunshine state











# HOTEL 18











MIAMI BEACH

































Hotel

























OOOOOOO O

Sup 101E

CRESCENT

MC ALPINE

P





OCEAN PLAZA





MIAMI

















MIAMI HAFENRUNDFAHRT





























MS

BLMD/323  
FF

↺

100  
102  
104  
106  
108  
110  
112  
114  
116  
118  
120  
122  
124  
126  
128  
130  
132  
134  
136  
138  
140  
142  
144  
146  
148  
150  
152  
154  
156  
158  
160  
162  
164  
166  
168  
170  
172  
174  
176  
178  
180  
182  
184  
186  
188  
190  
192  
194  
196  
198  
200

1/3

SHIPPING

+







KEYS





















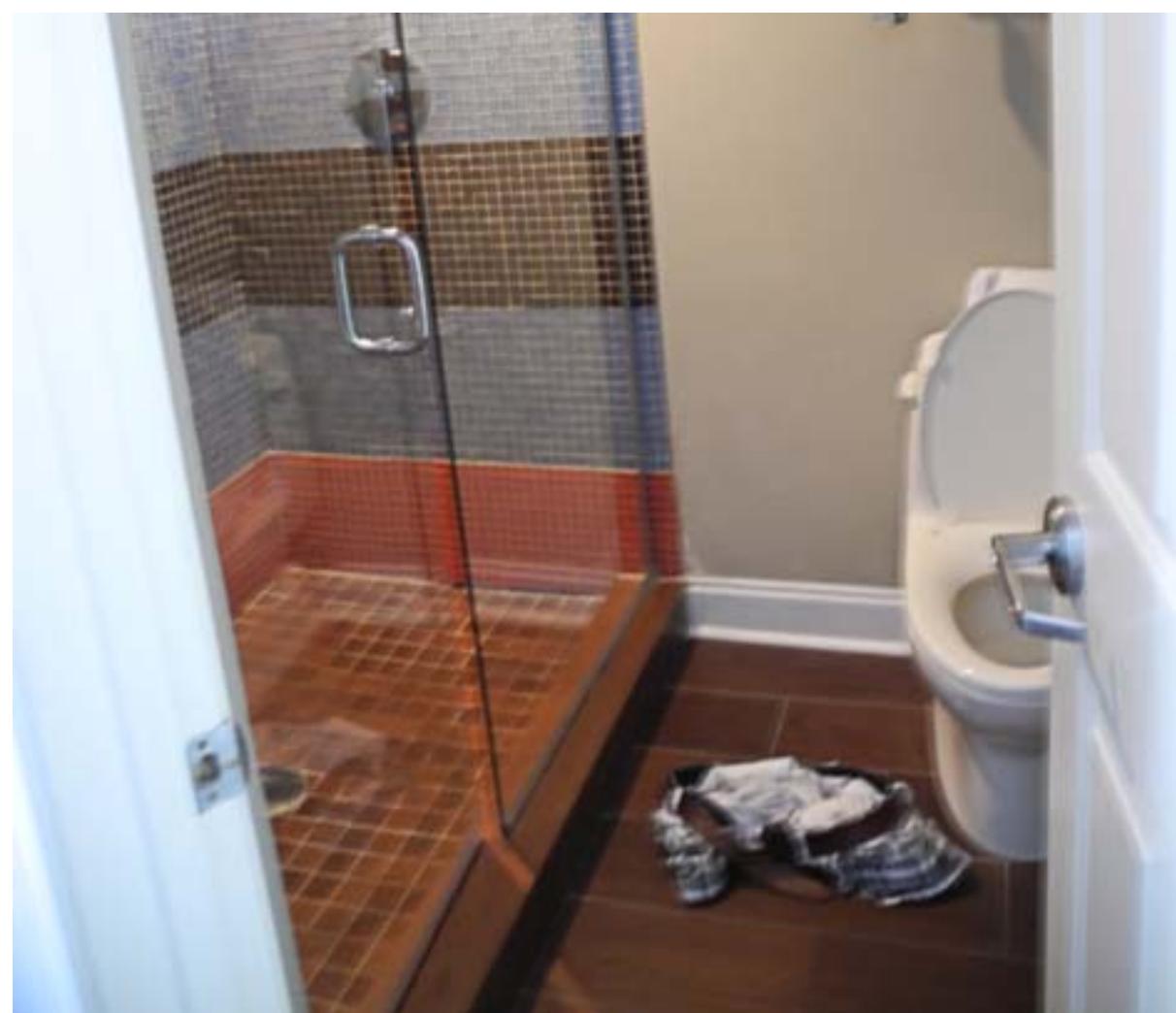




TRUMAN HOTEL











KEY WEST



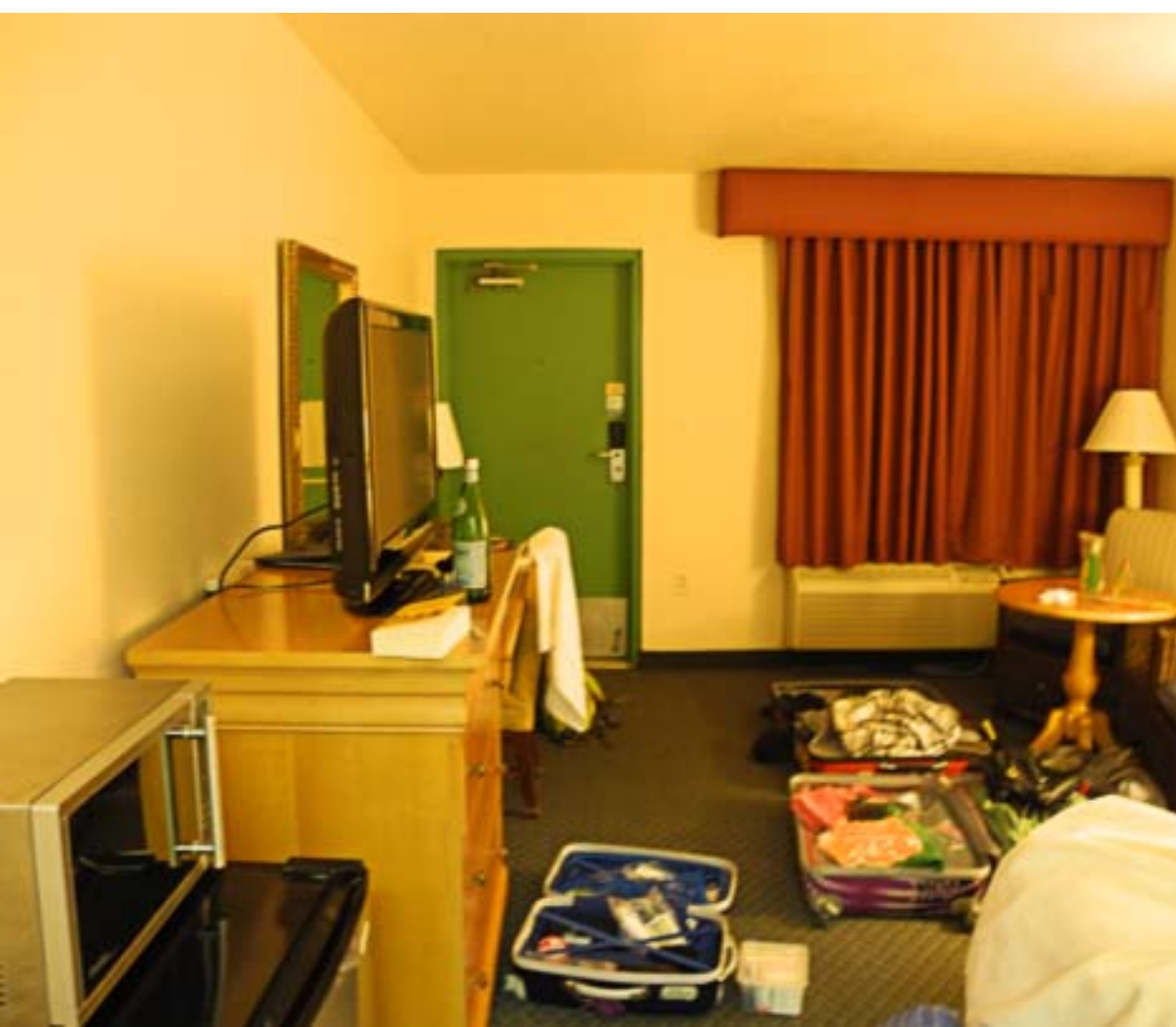




# TRAVEL LODGE











EVERGLADES NATIONAL PARK

















































AIRBOAT RIDE



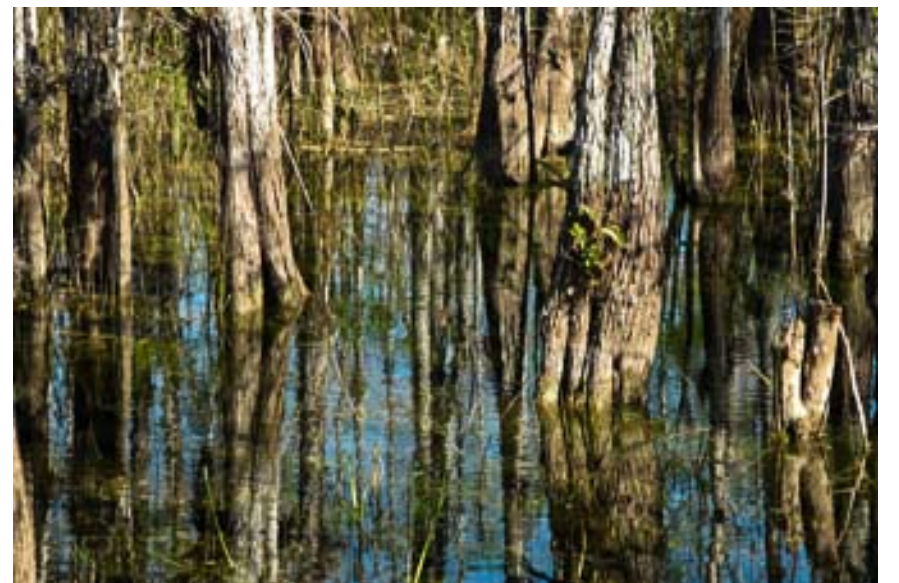






LOOP ROAD

































EVERGLADES NATIONAL PARK  
10.000 Islands







# The Fairways Inn of Naples











NAPLES









FAKAHATCHEE STRAND PRESERVE STATE PARK









FORT MYERS







# Holiday Inn Sarasota-Lakewood Ranch











MYAKKA RIVER STATE PARK

































St Petersburg - Honeymoon Island







# Holiday Inn Express











MANATEE KAJAK TOUR

























DAYTONA BEACH







# Quality Suites Lake Buena Vista











DISNEY LAND



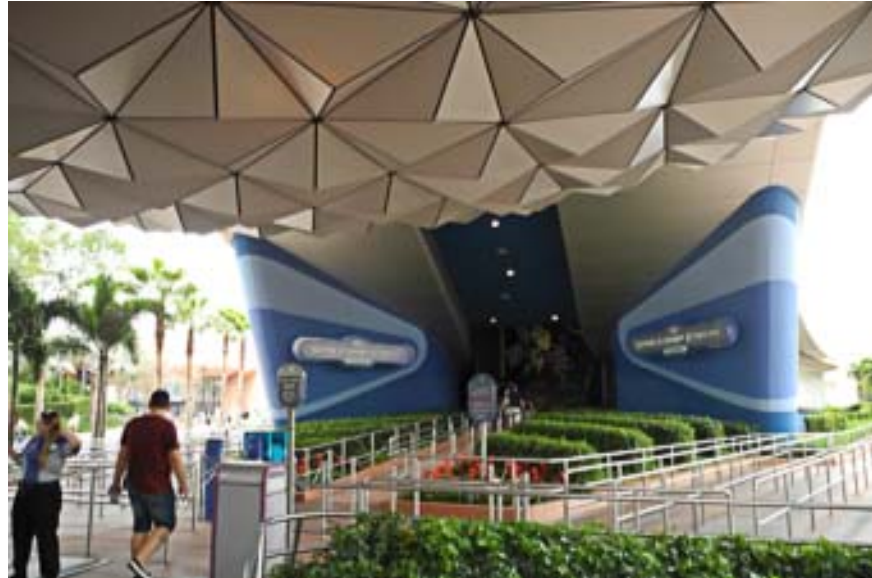






Epcot Center









DOWNTOWN DISNEY









UNIVERSAL ADVENTURES









UNIVERSAL STUDIOS









JOHN'S RIVER AIRBOAT RIDE

















MERRIT ISLAND



















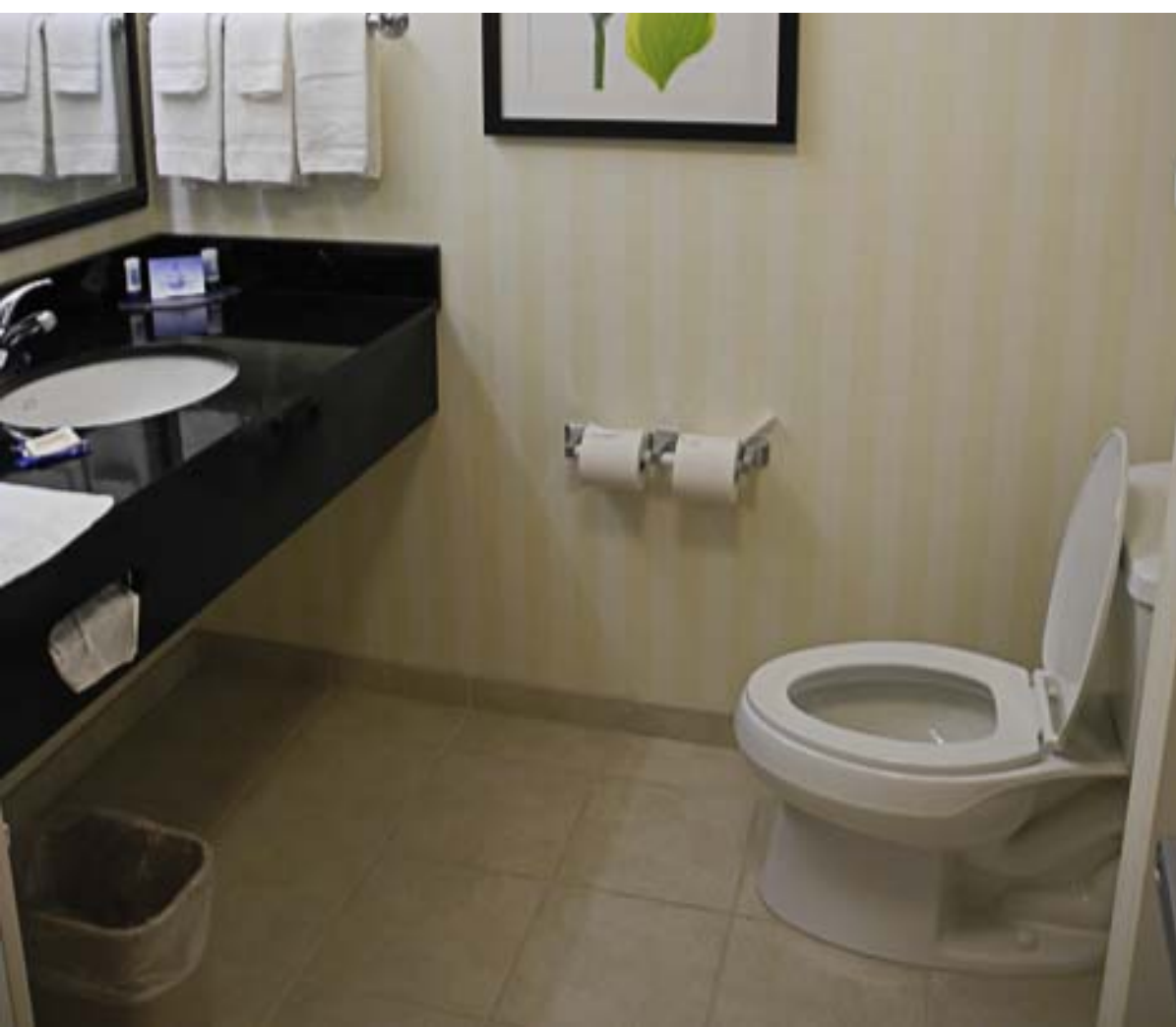




Fairfield Inn and Suites  
by Marriott Titusville Kennedy Space Center











KENNEDY SPACE CENTER





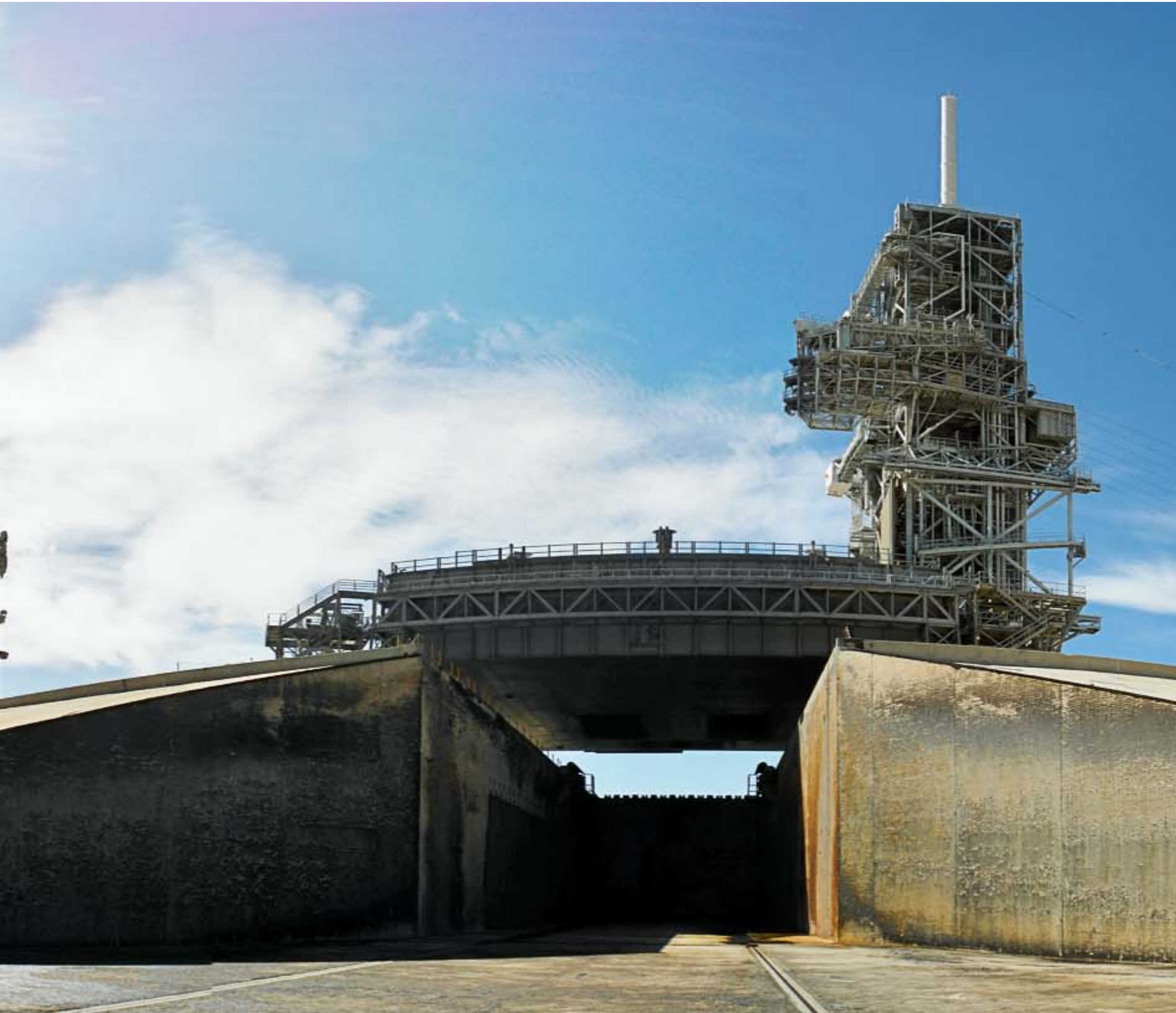


































# TURN V HOW DOES IT COMPARE ?

Landing gear on the VAB and securing them safely on Earth required a fourth article of unprecedented strength and size. NASA responded to the challenge by developing the most powerful and cost-effective support system in American history. Weighing almost 8.2 million pounds, a fully loaded Space V was as heavy as seven Boeing 747 jumbo jets.

# TO MOVE A GIANT...



The Space Shuttle orbiter and external tank were transported to the VAB by the Shuttle Carrier Aircraft (SCA). The SCA is a modified Boeing 747-200. The orbiter and external tank are loaded into the main cabin of the SCA. The SCA is then transported to the VAB by the Shuttle Shuttle Carrier Aircraft (SSCA).

BY BOB AND ANN LAMB

# INSIDE THE VAB



High-Rise  
The VAB is a high-rise building. It is the tallest building in the world. It is 545 feet tall. It is the tallest building in the world. It is 545 feet tall. It is the tallest building in the world. It is 545 feet tall.

Space Shuttle  
The Space Shuttle orbiter and external tank are transported to the VAB by the Shuttle Carrier Aircraft (SCA). The SCA is a modified Boeing 747-200. The orbiter and external tank are loaded into the main cabin of the SCA. The SCA is then transported to the VAB by the Shuttle Shuttle Carrier Aircraft (SSCA).

S-1C-6





STAGE 1

RIGHT-STUFF

APOLLO 9









SM-11-15 OM-2C

STAGE 2

APOLLO 11  
Conrad - Gordon - Bean

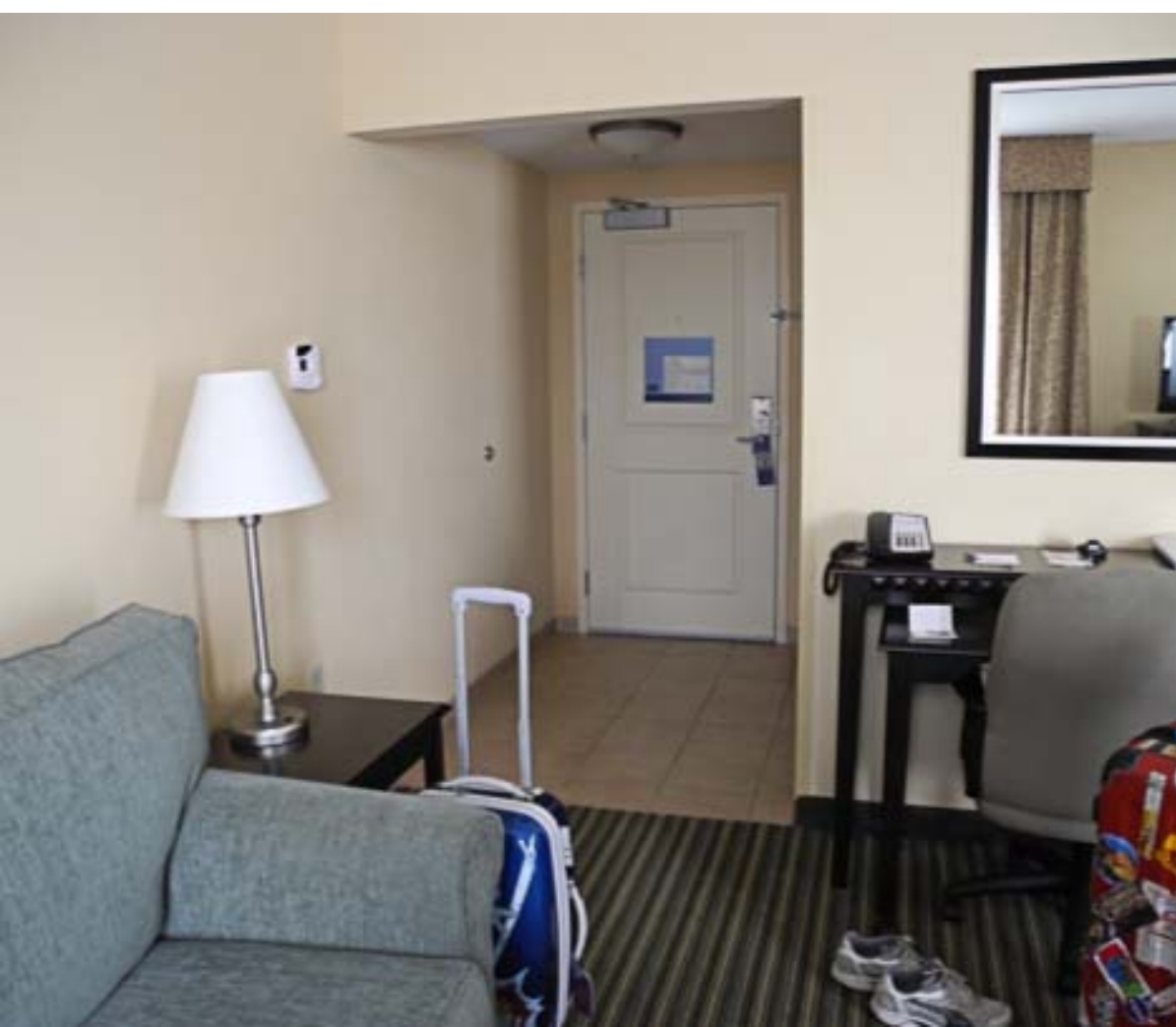
APOLLO 11



Hampton Inn & Suites  
Ft. Lauderdale/West-Sawgrass/Tamarac











Bsaketball



